



HNE Simulation Centre

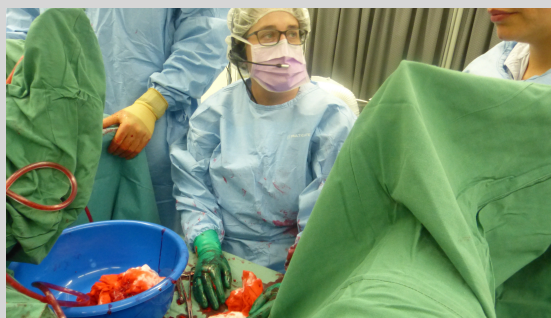
Obstetric Emergencies

Contact

T: (02) 4921 4268

E: HNELHD-SC@health.nsw.gov.au

W: [HNE Simulation Centre \(nsw.gov.au\)](http://HNE Simulation Centre (nsw.gov.au))



Obstetric Emergencies

Dates 0830-1630

Wednesday, 5 June 2024

7
CPD HOURS

Suitable for Anaesthesia trainees BTY1 & above, Obstetric trainees, Anaesthesia consultants, Obstetric consultants, Anaesthesia nurses, Anaesthesia technicians, Recovery staff, Midwives

Prerequisites Nil

Location HNE Simulation Centre, John Hunter Hospital Campus

Aim

To rehearse the management of obstetric crises.

Content

This inter-professional team-training course provides an update on current management of everyday obstetric emergencies with an additional focus on the principles of Crisis Resource Management (CRM). Obstetric emergencies require effective teamwork to ensure best possible outcomes. This course promotes a team-based approach and midwives, anaesthesia assistants, recovery staff, obstetricians and anaesthetists are encouraged to attend. It is also suitable for the 'occasional' obstetric anaesthetist looking to refresh their skills, as well as trainees preparing for fellowship exams.

CPD

ANZCA CPD category 2 (knowledge & skills – participation in a course). Credits: 2 credits per hour. Further information about the ANZCA CPD Program can be found on the College website www.anzca.edu.au

Cost

(incl GST)

HNE Nurses	\$119	HNE Medical Officer Consultant, incl VMO	\$1041
External Nurses	\$411	External Consultant	\$1617
HNE Medical Officer Trainee	\$119		
External Trainee	\$871		

Contact the HNE SC for information about funding assistance

T: (02) 4921 4268

E: HNELHD-SC@health.nsw.gov.au

W: [HNE Simulation Centre \(nsw.gov.au\)](http://HNE Simulation Centre (nsw.gov.au))

